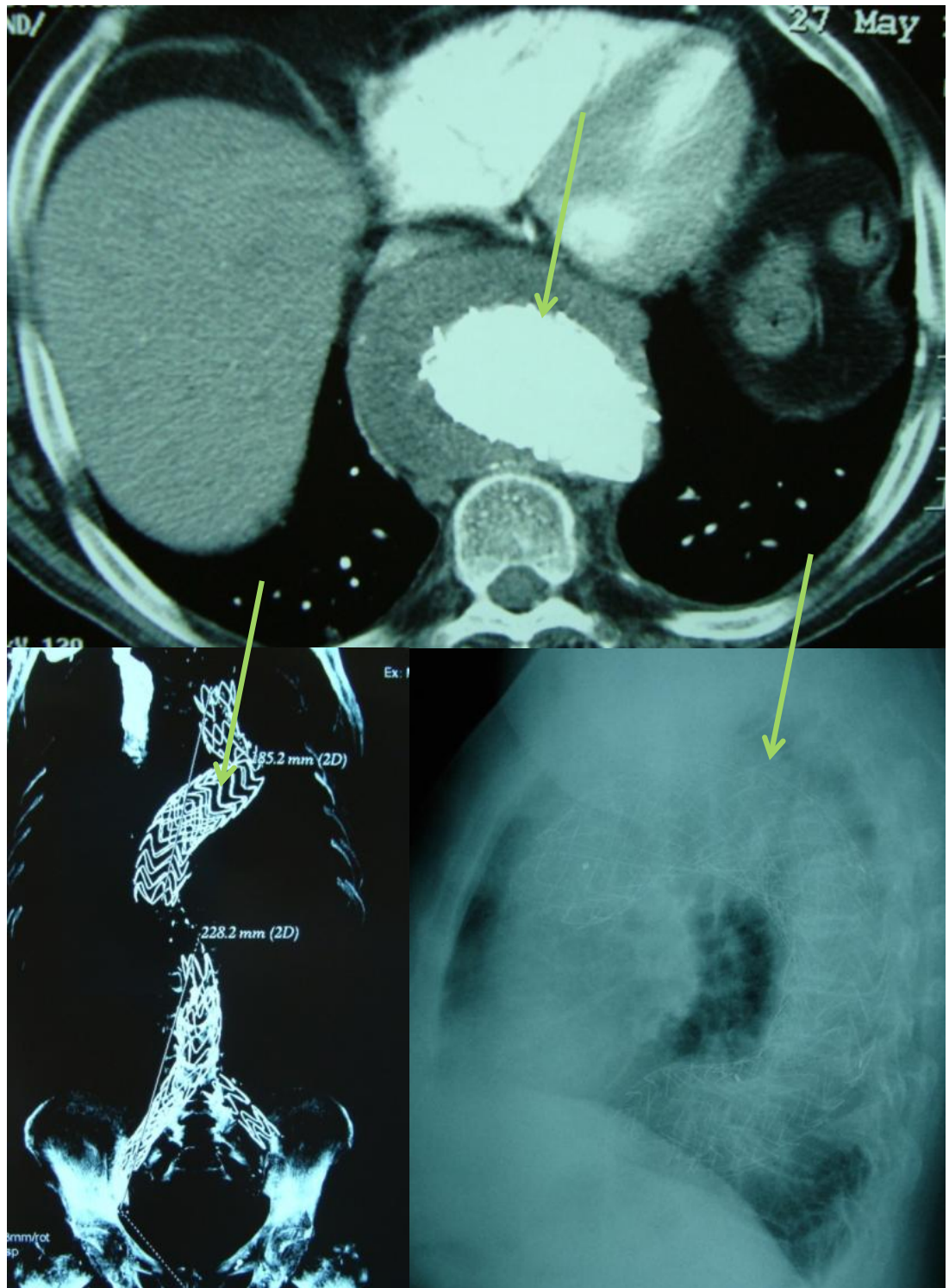


**Descending thoracic aortic aneurysm rupture (red arrow).  
Huge hemothorax (yellow arrow)**

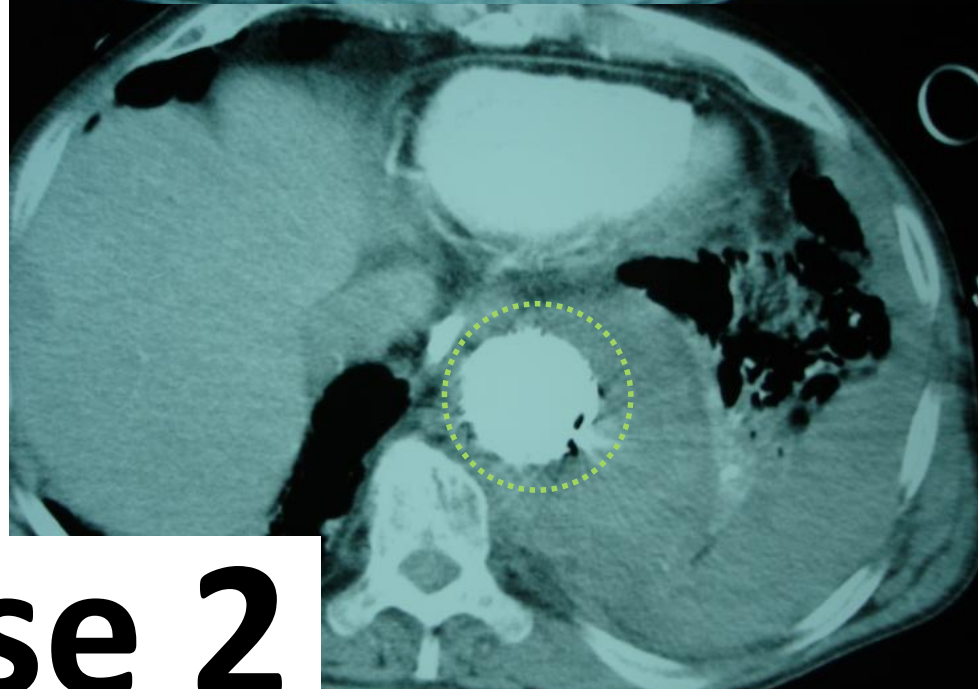
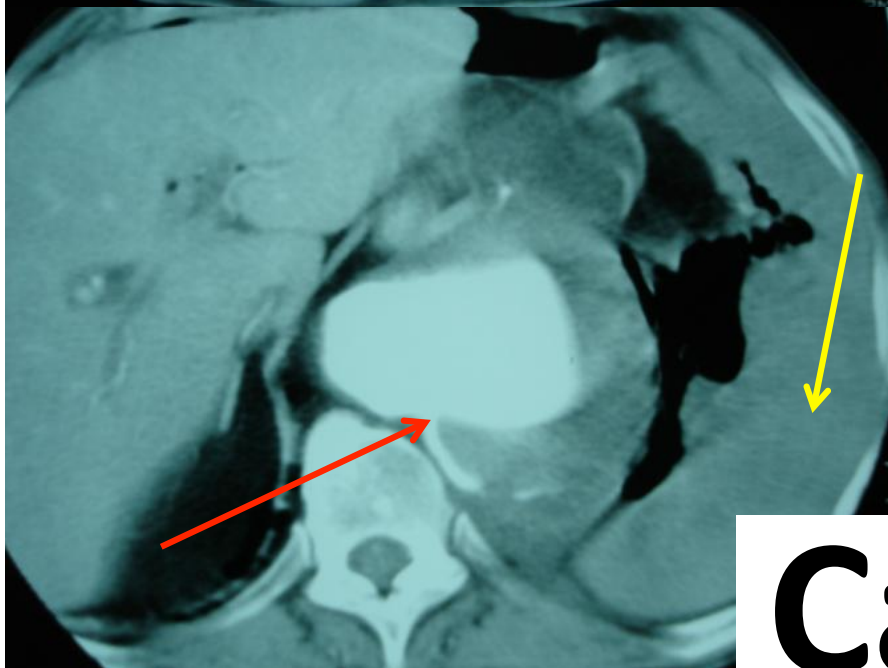
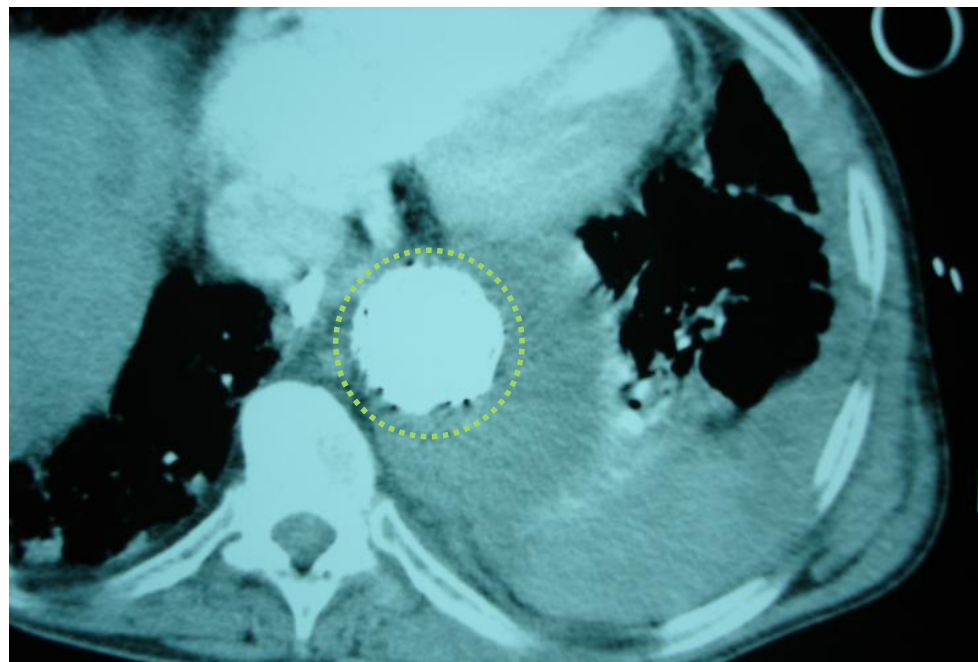
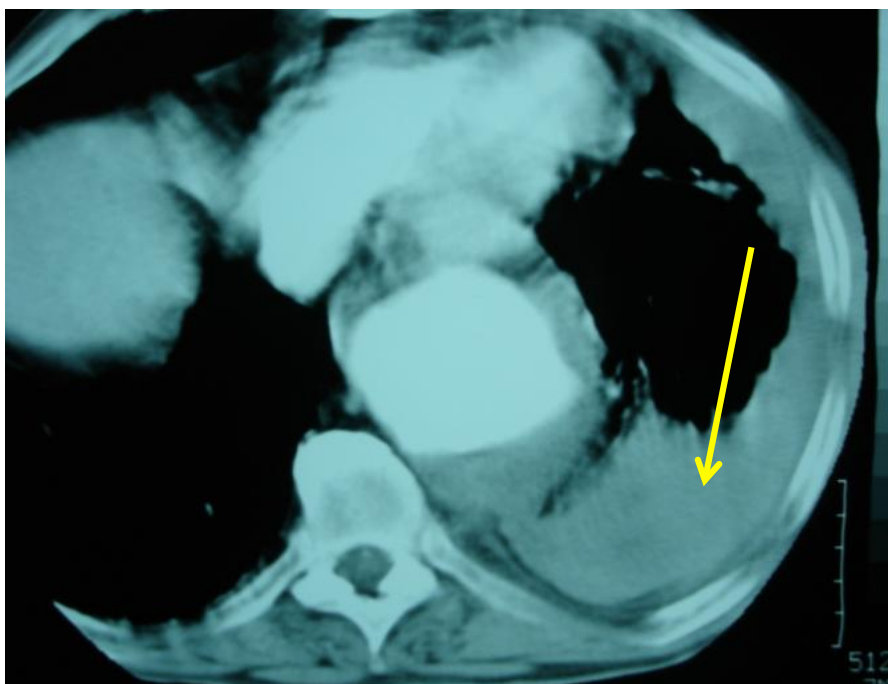


**endoluminal repair with stentgraft (green arrow)**

# Case 1



Descending thoracic aortic aneurysm rupture (red arrow). Huge hemothorax (yellow arrow) - endoluminal repair with stentgraft (green circle)



**Case 2**